

# PLASTIC CAP PLUGS

## CAP PLUG APPLICATION CHART



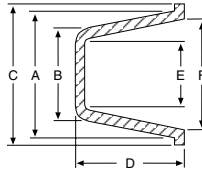
This style cap plug is equipped with a handy fold-down pull ring.

### Tapered Caps & Plugs With Pull Ring

Part Number	NPT Port Size	OD Size Tapered	HT	Min Std Pkg	List Price
CAP-PR-9	1/8	.337/.375	1/4	50	\$0.12
CAP-PR-12	1/4	.436/.475	1/4	50	0.34
CAP-PR-17	3/8	.552/.615	3/8	50	0.19
CAP-PR-22	1/2	.668/.767	1/2	40	0.21
CAP-PR-27X	3/4	.878/.977	1/2	40	0.24
CAP-PR-32	1	1.113/1.212	1/2	25	0.27
CAP-PR-39	1-1/4	1.505/1.580	1/2	25	0.35
CAP-PR-43	1-1/2	1.780/1.860	1/2	20	0.39
CAP-PR-50	2	2.226/2.258	1/2	20	0.48

CAP-	NPT		INCH THREAD		METRIC THREAD	
	CAPS	PLUGS	CAPS	PLUGS	CAPS	PLUGS
00				10/32	M2,M2.5	M5
0				1/4	M3,M3.5	M6
1				5/16	M5	M8x1
1-X					M6	
2			15/64	3/8	M7	M10x1.25
2-X		1/8				
3				7/16	M8x1	M12
3-X			3/8			M12x1.25
4	1/8	1/4		1/2	M10x1.25	M14
4-X			7/16			M14x1.5
5			1/2	9/16		
5-X					M12x1.25	M16
6	1/4			5/8		
6-X		3/8	9/16			M18
7			5/8		M14x1.5	M18x1.5
7-X						
8				3/4		M20
8-X	3/8				M16x1.5	M20x1.5
9		1/2				M22
9-X			3/4			M22x1.5
10				7/8	M18x1.5	M24
11	1/2					M24x2
11-X			7/8		M20x1.5	
12		3/4				
12-X				1-1/16	M22x1.5	M27x2
13	3/4				M24x2	
13-X			1-1/16			M30x2
14		1			M27x2	M33
17		1-1/4			M36x3	
17-S				1-5/8		
18	1-1/4		1-5/8	1-3/4	M39x3	
19		1-1/2		1-7/8		
20	1-1/2		1-7/8			
20-S						
21						
220						
230			2-1/4			
24-S		2				
240	2					
250			2-1/2			

# PLASTIC CAP PLUGS



## Tapered Caps & Plugs For Misc. Applications

Part Number	A	B	C	D	E	F	List Price
CAP-00	.180	.115	5/16	13/32	.051	.118	\$ 0.24
CAP-0	.240	.175	3/8	3/8	.109	.175	0.37
CAP-0-X	0.275	0.209	7/16	3/8	0.150	0.209	0.08
CAP-1	.302	.240	15/32	3/8	.175	.240	0.26
CAP-1-X	.335	.265	15/32	3/8	.240	.275	0.26
CAP-2	.365	.300	17/32	3/8	.234	.301	0.26
CAP-3	.428	.360	19/32	3/8	.299	.365	0.22
CAP-3-X	.460	.390	5/8	3/8	.325	.396	0.26
CAP-4-X	.512	.447	5/8	3/8	.385	.448	0.05
CAP-5	.547	.490	23/32	1/2	.409	.485	0.05
CAP-5-X	.568	.500	3/4	7/16	.435	.503	0.06
CAP-6	.620	.531	3/4	1/2	.468	.555	0.05
CAP-6A-X	0.576	0.500	0.720	0.470	0.440	0.516	0.09
CAP-7	.675	.590	7/8	17/32	.520	.605	0.06
CAP-7-X	.695	.610	27/32	1/5	.549	.634	0.08
CAP-8	.728	.641	7/8	1/2	.575	.665	0.06
CAP-8-X	.754	.675	7/8	5/8	.615	.690	0.06
CAP-9-X	.925	.725	1	3/4	.662	.760	0.06
CAP-10	.848	.750	1-1/32	5/8	.686	.785	0.06
CAP-11	.910	.802	1-3/32	3/4	.740	.846	0.19
CAP-11-X	.931	.820	1-1/8	5/8	.754	.868	0.06
CAP-12A-X	0.973	0.856	1-1/8	3/4	0.768	0.906	0.15
CAP-13	1.091	.966	1-1/4	3/4	.902	1.025	0.19
CAP-13-X	1.145	1.002	1-5/16	3/4	.938	1.079	0.08
CAP-14-X	1.285	1.180	1-7/16	3/4	1.105	1.215	0.61
CAP-16A-X	1.312	1.276	1.380	0.560	1.155	1.190	0.21
CAP-17A-X	1.507	1.344	1-3/4	15/16	1.282	1.450	0.23
CAP-18	1.680	1.560	1-7/8	3/4	1.497	1.620	0.17
CAP-20	1.958	1.806	2.125	1	1.745	1.893	0.67
CAP-20-X	2.310	1.940	2.470	0.880	1.875	2.255	0.41
CAP-21	2.078	1.902	2-1/4	1	1.839	2.015	0.27
CAP-38	1.045	.980	1-1/4	1/2	.916	.984	0.26
CAP-220	2.132	1.980	2-1/4	1	1.915	2.068	0.27
CAP-230	2.330	2.156	2-5/8	1	2.094	2.264	0.75
CAP-240	2.465	2.300	2-5/8	1	2.235	2.400	0.35
CAP-250	2.605	2.395	2-5/8	1	2.331	2.541	0.37

## Tapered Caps & Plugs For NPT Style Ports

Part Number	NPT Port Size	OD Size Tapered	HT	Min Std Pkg	List Price
CAP-2-X	1/8	.330/.396	3/8	50	\$ 0.08
CAP-4	1/4	.419/.485	3/8	50	0.08
CAP-6-X	3/8	.550/.631	7/16	50	0.12
CAP-9	1/2	.690/.788	9/16	50	0.12
CAP-12	3/4	.870/.975	5/8	120	0.06
CAP-12-X	3/4	.915/1.040	11/16	25	0.21
CAP-14	1	1.094/1.215	3/4	25	0.21
CAP-15	1	1.225/1.355	3/4	3	0.38
CAP-15-X	1	1.235/1.350	3/4	25	0.24
CAP-17	1-1/4	1.450/1.600	3/4	60	0.12
CAP-17-S	1-1/4	1.513/1.600	1/2	25	0.24
CAP-19	1-1/2	1.735/1.870	3/4	25	0.38
CAP-20-S	1-1/2	1.781/1.805	3/8	25	0.24
CAP-24-S	2	2.230/2.260	1/2	20	0.30

## MCAP Tapered Caps & Plugs For Misc. Applications



Part Number	A mm	B mm	C mm	D mm	E mm	F mm	List Price
CAP-M10X1	27.71	24.54	31.75	19.05	22.91	26.04	\$ 0.19
CAP-M12X1	29.08	25.45	33.35	19.05	23.83	27.41	0.08
CAP-M12X1.5	14.63	12.7	18.29	11.94	11.18	13.11	0.09
CAP-M14X1.5	29.08	25.45	33.35	19.05	23.83	27.41	0.08
CAP-M16X1.5	31.24	28.19	38.51	19.05	26.37	29.97	0.21
CAP-M18X1.5	32.64	29.97	36.53	19.05	28.07	30.86	0.61
CAP-M20X1.5	24.71	21.74	28.58	19.05	19.51	23.01	0.15
CAP-M22X1.5	42.49	39.62	47.63	19.05	38.02	41.15	0.17
CAP-M25X1.5	8.51	6.73	11.91	9.53	5.18	6.99	0.26
CAP-M26X1.5	49.73	45.87	53.98	25.4	44.32	48.08	0.67
CAP-M27	10.87	9.14	15.09	9.53	7.59	9.27	0.22
CAP-M28X1.5	13	11.35	15.88	10.31	9.78	11.38	0.05
CAP-M30X2	33.32	32.41	35.05	14.22	29.34	30.23	0.21
CAP-M35	38.28	34.14	44.45	23.81	32.56	36.83	0.23
CAP-M39	14.43	12.7	19.05	11.13	11.05	12.78	0.06
CAP-M4	6.99	5.31	11.11	9.53	3.81	5.31	0.08
CAP-M42X2	17.15	14.73	22.23	13.49	13.21	15.37	0.06
CAP-M45	19.15	17.15	22.23	15.88	15.62	17.53	0.06
CAP-M48	58.67	49.28	62.74	22.35	47.63	57.28	0.41
CAP-M5	7.67	6.1	11.91	9.53	4.45	6.1	0.26
CAP-M6	21.54	19.05	26.19	15.88	17.42	19.74	0.06
CAP-M8X1	26.42	22.73	28.96	19.05	21.13	24.77	0.21

# PLASTIC CAP PLUGS



**Female Threaded Cap Plugs  
for J.I.C. Fittings**

Part Number	Std Thread Size	O.D. Size Tube	Dash Size	Min Std Pkg	List Price
CAP-G-2	7/16-20	1/4	#4	20	\$ 0.21
CAP-G-8	9/16-18	3/8	#6	20	0.21
CAP-G-14	3/4-16	1/2	#8	20	0.24
CAP-G-18	7/8-14	5/8	#10	20	0.24
CAP-G-20	7/8-18	5/8	#10	20	0.54
CAP-G-22	1-1/16-12	3/4	#12	20	0.30
CAP-G-25	1-3/16-12	7/8	#14	20	0.35
CAP-G-27	1-5/16-12	1	#16	20	0.35



**Flat Face Fitting Caps**

Part Number	Tube Size OD	Thread Size	Min Std Pkg	List Price
CAP-PDF-40	1/4	9/16-18.	25	\$ 0.34
CAP-PDF-60	3/8	11/16-16	25	0.30
CAP-PDF-80	1/2	13/16-16.	25	0.34
CAP-PDF-100	5/8	1-14	20	0.36
CAP-PDF-120	3/4	1-3/16-12	20	0.43
CAP-PDF-160	1	1-7/16-12	10	1.97



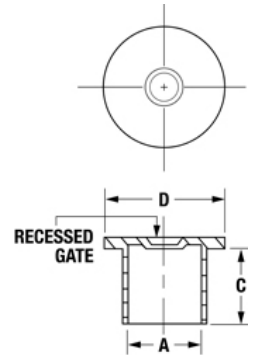
**O-Ring Face Fitting Caps**

These low density polyethylene caps are designed to fit female o-ring face seals.

Part Number	Thread Size	Min Std Pkg	List Price
CAP-OR-4	9/16-18	35	\$ 0.22
CAP-OR-6	11/16-16	25	0.24
CAP-OR-8	13/16-16	25	0.27
CAP-OR-10	1-14	25	0.34
CAP-OR-12	1-3/16-12	25	0.36
CAP-OR-16	1-7/16-12	15	0.81
CAP-OR-20	1-11/16-12	10	1.36



Unlike tear-tab closures that can only be used once, the CAP-PO series is designed to be reused. Specifically designed to protect straight threads with or without o-rings, this unique design is also ideal for use on a variety of thread forms and non-threaded fittings.



**Straight Threaded Cap Plugs**

Part Number	Min Std Pkg	To Cap Thread size	A	C	D	List Price
CAP-PO-20	25	7/16"	0.428	0.47	0.69	\$ 0.37
CAP-PO-30	25	1/2"	0.49	0.47	0.75	0.51
CAP-PO-40	25	9/16"	0.55	0.50	0.81	0.54
CAP-PO-50	25	11/16"	0.676	0.50	0.94	0.58
CAP-PO-55	25	-	0.721	0.67	1.00	0.61
CAP-PO-60	25	3/4"	0.738	0.67	1.00	0.61
CAP-PO-70	25	13/16"	0.802	0.56	1.06	0.64
CAP-PO-80	25	7/8"	0.864	0.66	1.12	0.66
CAP-PO-90	25	1.00"	0.99	0.66	1.25	0.69
CAP-PO-100	15	1-1/16"	1.051	0.75	1.31	0.73
CAP-PO-110	15	1-3/16"	1.175	0.75	1.44	0.90
CAP-PO-120	15	1-5/16"	1.298	0.75	1.56	1.00
CAP-PO-130	15	1-7/16"	1.426	0.75	1.69	1.25
CAP-PO-140	10	1-5/8"	1.12	0.85	1.88	1.37

**Cap Plug Assortment Kits  
Also Available -  
See the Kit & Tool Section**

# PLASTIC CAP PLUGS



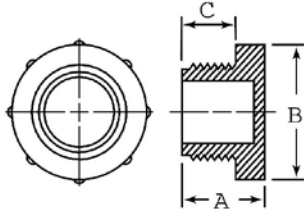
**Male Threaded Pipe Plugs (Sq. Top)**

Part Number	NPT Port Size	Thread Size	Min Std Pkg	List Price
CAP-P-18	1/8	0.364	25	\$ 0.12
CAP-P-28	1/4	0.477	25	0.21
CAP-P-38	3/8	0.612	25	0.24
CAP-P-48	1/2	0.758	25	0.24
CAP-P-68-H	3/4	0.968	25	0.27
CAP-P-88-H	1	1.214	20	1.09
CAP-TP-13	1-1/4	1.557	5	1.90
CAP-TP-15	1-1/2	1.796	5	1.90



**Male Threaded Cap Plugs for Flared J.I.C. Fittings**

Part Number	Std Thread Size	OD Size Tube	Dash Size	Min Std Pkg	List Price
CAP-PD-40	7/16-20	1/4	#4	25	\$ 0.36
CAP-PD-50	1/2-20	5/16	#5	25	0.36
CAP-PD-60	9/16-18	3/8	#6	25	0.21
CAP-PD-80	3/4-16	1/2	#8	25	0.21
CAP-PD-100	7/8-14	5/8	#10	25	0.24
CAP-PD-120	1-1/16-12	3/4	#12	25	0.24
CAP-PD-140	1-3/16-12	7/8	#14	20	0.37
CAP-PD-160	1-5/16-12	1	#16	20	0.37
CAP-PD-200	1-5/8-12	1-1/4	#20	15	0.45
CAP-PD-220	1-3/4-12	1-3/8	#22	10	1.16
CAP-PD-240	1-7/8-12	1-1/2	#24	10	1.04



**Miscellaneous - MCAP- TP**

Part Number	To Fit Metric Thread Size	A		B		C		Min Std Pkg	List Price
		in	mm	in	mm	in	mm		
MCAP-TP-M8X1	M8 x 1	0.562	14.27	0.484	12.29	0.374	9.50	10	\$ 0.63
MCAP-TP-M10X1	M10 x 1	0.574	14.58	0.602	15.29	0.409	10.39	10	0.88
MCAP-TP-M12X1	M12 x 1	0.657	16.69	0.728	18.49	0.421	10.69	10	0.94
MCAP-TP-M12X1.5	M12 x 1.5	0.641	16.28	0.657	16.69	0.342	8.69	10	1.08
MCAP-TP-M14X1.5	M14 x 1.5	0.677	17.20	0.728	18.49	0.374	9.50	10	1.15
MCAP-TP-M16X1.5	M16 x 1.5	0.677	17.20	0.866	22.00	0.492	12.50	10	1.12
MCAP-TP-M18X1.5	M18 x 1.5	0.720	18.29	0.960	24.38	0.539	13.69	10	1.18
MCAP-TP-M20X1.5	M20 x 1.5	0.716	18.19	1.035	26.29	0.551	14.00	10	1.12
MCAP-TP-M22X1.5	M22 x 1.5	0.720	18.29	1.110	28.19	0.539	13.69	10	1.12
MCAP-TP-M24X1.5	M24 x 1.5	0.728	18.49	1.232	31.29	0.543	13.79	10	1.29
MCAP-TP-M25X1.5	M25 x 1.5	0.728	18.49	1.232	31.30	0.551	14.00	5	1.42
MCAP-TP-M26X1.5	M26 x 1.5	0.736	18.69	1.287	32.69	0.543	13.79	5	1.44
MCAP-TP-M52X1.5	M52 x 1.5	0.846	21.50	2.508	63.70	0.610	15.50	5	1.62

# PLASTIC CAP PLUGS

# BOLTED SPLIT FLANGE PROTECTORS



These low density polyethylene caps protect the faces of split flange connectors

## Split Flange Coupling Caps - SAE CODE 61

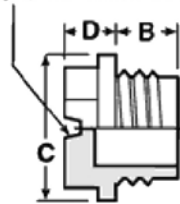
Part Number	Flange Size	Cap Size	Min Std Pkg	List Price
CAP-SF-8	1/2	1.19	50	\$ 0.12
CAP-SF-10	5/8	1.35	50	0.17
CAP-SF-12	3/4	1.50	50	0.19
CAP-SF-16	1	1.75	35	0.21
CAP-SF-20	1-1/4	2.00	35	0.22
CAP-SF-24	1-1/2	2.38	25	0.35
CAP-SF-32	2	2.81	15	0.46
CAP-SF-40	2-1/2	3.31	15	0.66

## Split Flange Coupling Caps - SAE CODE 62

Part Number	Flange Size	Cap Size	Min Std Pkg	List Price
CAP-HPSF-8	1/2	1.25	10	\$ 1.17
CAP-HPSF-12	3/4	1.625	10	1.22
CAP-HPSF-16	1	1.87	10	1.25
CAP-HPSF-20	1-1/4	2.125	10	1.29
CAP-HPSF-24	1-1/2	2.5	10	1.57
CAP-HPSF-32	2	3.125	10	1.57



SCREWDRIVER SLOT



## Threaded O-Ring Plugs

Part Number	Std Thread Size	B	C	D	Min Std Pkg	List Price
CAP-TF-9-OR	9/16-18	0.35	0.81	0.19	10	\$ 1.04
CAP-TF-12-OR	3/4-16	0.44	0.89	0.18	10	1.10



3,000 PSI Flanges  
SAE Code 61

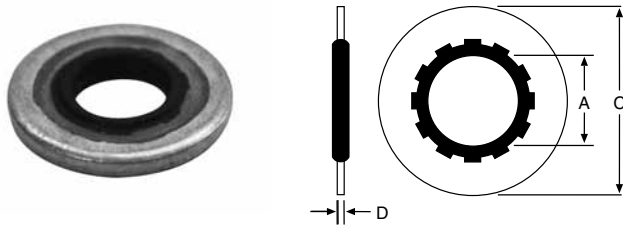
Part Number	Port Size	Min Std Pkg	List Price
CAP-8218	1/2	10	\$ 1.41
CAP-8219	3/4	10	1.44
CAP-8220	1	10	1.55
CAP-8221	1-1/4	10	1.64
CAP-8222	1-1/2	10	1.74
CAP-8223	2	10	1.92
CAP-8224	2-1/2	10	1.92

5,000 PSI Flanges  
SAE Code 62

CAP-XP-075	3/4	10	\$ 1.44
CAP-XP-100	1	10	1.55
CAP-XP-125	1-1/4	10	1.64
CAP-XP-150	1-1/2	10	1.74
CAP-XP-200	2	10	1.92

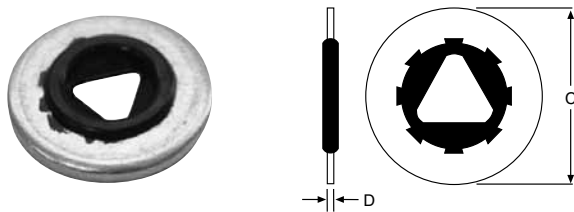
**Cap Plug Assortment Kits  
Also Available -  
See the Kit & Tool Section**

## STYLE 110 FACE SEALS



Part Number	Max Screw Size	A Rubber I.D.	B Steel I.D.	C Steel O.D.	D Steel Thick.	List Price
DY-110X8	.164	.156	.255	.385	.041	\$ 1.33
DY-110X10	.177	.180	.317	.443	.050	1.85
DY-110X3/16	.190	.220	.281	.425	.054	3.62
DY-110X7/32	.216	.246	.307	.455	.054	12.78
DY-110X1/4	.250	.240	.381	.505	.054	2.14
DY-110X5/16	.312	.301	.488	.603	.054	2.14
DY-110X3/8	.375	.368	.546	.666	.054	2.14
DY-110X7/16	.437	.427	.618	.760	.054	5.47
DY-110X1/2	.500	.490	.696	.880	.054	6.07
DY-110X9/16	.562	.552	.759	1.067	.054	6.07
DY-110X5/8	.625	.615	.818	1.193	.054	7.43

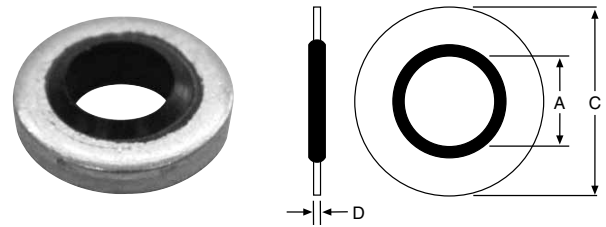
## THREAD SEAL



Thread seals provide a positive seal directly against the threads of a bolt. Self-centering and easily installed.

Part Number	C	D	Thread Size	List Price
TS7500X10	.469	.051	-10	\$ 2.78
TS7500X1/4	.562	.051	1/4	2.78
TS7500X5/16	.687	.064	5/16	3.47
TS7500X3/8	.750	.064	3/8	3.61
TS7500X7/16	.906	.078	7/16	5.06
TS7500X1/2	1.000	.078	1/2	11.17
TS7500X7/8	1.562	.109	7/8	18.28

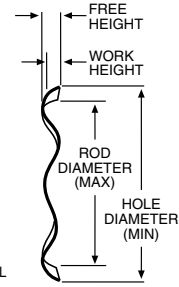
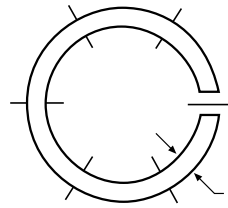
## STYLE SB FACE SEALS



Part Number	A	C	D	List Price
DY-SB-001	.115	.250	.048	\$ 1.86
DY-SB-002	.157	.286	.048	1.86
DY-SB-003	.205	.330	.051	1.45
DY-SB-004	.270	.520	.051	1.45
DY-SB-005	.270	.525	.048	2.06
DY-SB-006	.322	.525	.048	2.06
DY-SB-007	.340	.560	.051	1.49
DY-SB-020A	.408	.625	.083	1.58
DY-SB-008	.443	.723	.083	1.58
DY-SB-009	.460	.750	.083	1.60
DY-SB-225	.531	.866	.059	1.64
DY-SB-021B	.541	.810	.083	1.60
DY-SB-010	.585	.875	.083	1.75
DY-SB-022BB	.625	.875	.083	1.77
DY-SB-011	.650	1.000	.083	1.80
DY-SB-023C	.680	.937	.083	1.83
DY-SB-012	.715	1.000	.097	1.83
DY-SB-024CC	.775	1.060	.097	2.01
DY-SB-025D	.848	1.125	.097	2.26
DY-SB-026E	.925	1.250	.097	2.48
DY-SB-013	.955	1.310	.097	4.34
DY-SB-027F	1.065	1.375	.097	3.01
DY-SB-240	1.083	1.417	.07	3.08
DY-SB-028	1.095	1.520	.097	3.91
DY-SB-014	1.150	1.440	.092	4.28
DY-SB-029G	1.213	1.500	.097	4.55
DY-SB-015	1.280	1.630	.128	4.89
DY-SB-031	1.329	1.685	.092	5.37
DY-SB-030H	1.334	1.685	.133	4.59
DY-SB-016	1.410	1.750	.133	10.53
DY-SB-032J	1.690	2.062	.133	8.79
DY-SB-033K	1.907	2.307	.103	10.19
DY-SB-019	2.030	2.500	.128	15.98
DY-SB-034	2.161	2.750	.133	17.22
DY-SB-036	2.385	2.875	.133	14.40
DY-SB-038	2.625	3.130	.133	23.10
DY-SB-039	2.995	3.550	.133	25.89

# WAVE SPRINGS

Wave Springs offer a convenient method of exerting a pre-load on vee packing where little or no adjustment is available. Because of a low fatigue factor, the spring should provide a proper pre-load throughout the life of the packing.

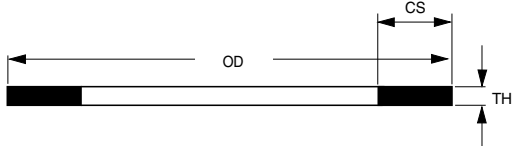


REPAIR ACCESSORIES

Part Number	Hole Diameter (Min)	Rod Diameter (Max)	Free Height	Work Height	Radial Wall	List Price
SSR-0125	1.250	.960	.150	.078	.133	\$ 4.38
SSR-0150	1.500	1.170	.170	.078	.143	4.65
SSR-0175	1.750	1.440	.140	.078	.143	4.65
SSR-0187	1.875	1.560	.150	.078	.143	4.65
SSR-0200	2.000	1.680	.140	.093	.150	5.05
SSR-0225	2.250	1.930	.170	.093	.150	5.34
SSR-0237	2.375	1.990	.160	.093	.178	5.52
SSR-0250	2.500	2.120	.170	.093	.178	5.80
SSR-0262	2.625	2.240	.190	.093	.178	5.80
SSR-0275	2.750	2.340	.170	.109	.188	6.38
SSR-0300	3.000	2.590	.190	.109	.188	6.82
SSR-0312	3.120	2.710	.210	.109	.188	6.76
SSR-0325	3.250	2.750	.200	.109	.233	7.33
SSR-0350	3.500	3.000	.230	.109	.233	13.67
SSR-0362	3.625	3.120	.240	.109	.233	13.93
SSR-0375	3.750	3.250	.260	.109	.233	8.61
SSR-0425	4.250	3.740	.210	.109	.233	27.13
SSR-0462	4.625	4.125	.230	.109	.233	10.59
SSR-0512	5.125	4.610	.340	.125	.233	37.98

# CARBON STEEL SHIMS

These carbon steel shims are commonly used with vee packing sets to fill the empty space in a gland.



Part Number	OD	Thickness	Cross Section	Price
SSRS-0150	1.500	.024	.150	\$ 1.86
SSRS-0175	1.750	.024	.150	1.86
SSRS-0200	2.000	.024	.150	2.60

Part Number	OD	Thickness	Cross Section	Price
SSRS-0237	2.375	.024	.178	\$ 3.88
SSRS-0312	3.125	.030	.188	2.48
SSRS-0375	3.750	.030	.233	2.93



# GRADE C LOCKNUTS

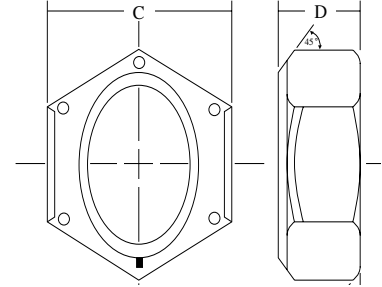
These fine-threaded Grade C locknuts are formed from medium carbon, heat-treated steel and are designed to be used with a Grade 8 bolt. Smaller size locknuts employ an automation style collar while the larger ones use a full collar design. Both locknut types are stocked with cadmium and wax plating.

## Automation Style

Part Number	Size	Thread Pitch	C Width Across Flats		D Overall Thickness		List Price
			Max	Min	Max	Min	
LN-1/2-13	1/2	13	0.7500	0.736	0.510	0.490	\$ 0.92
LN-1/2-20	1/2	20	0.752	0.741	0.609	0.579	0.55
LN-1-14	1	14	1.5020	1.450	0.887	0.831	4.56
LN-3/4-16	3/4	16	1.1250	1.088	0.665	0.617	2.74
LN-5/8-18	5/8	18	0.9375	0.922	0.645	0.621	1.31
LN-7/8-14	7/8	14	1.3145	1.269	0.922	0.724	3.63
LN-7/16-20	7/16	20	0.627	0.616	0.468	0.438	2.36



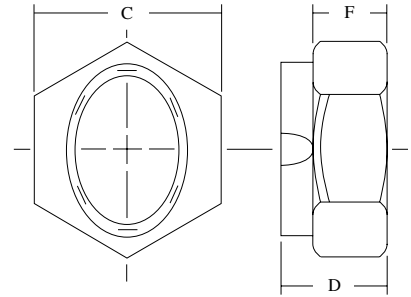
## Automation Style



## Full Collar Style

Part Number	Size	Thread Pitch	C Width Across Flats		D Overall Thickness		F Hex Height		List Price
			Max	Min	Max	Min	Max	Min	
LN-1-1/2-12	1-1/2	12	2.250	2.175	1.317	1.246	0.885	0.843	\$ 24.16
LN-1-1/4-12	1-1/4	12	1.876	1.812	1.094	1.030	0.719	0.698	14.58
LN-1-1/8-12	1-1/8	12	1.687	1.631	0.999	0.939	0.657	0.636	11.80
LN-1-3/4-12	1-3/4	12	2.625	2.538	1.540	1.460	1.012	0.989	44.30
LN-1-3/8-12	1-3/8	12	2.062	1.994	1.206	1.138	0.795	0.771	21.61
LN-2-12	2	12	3.000	2.900	1.763	1.675	1.158	1.134	98.17
LN-2-1/2-12	2-1/2	12	3.750	3.625	2.193	2.089	1.930	1.840	118.68

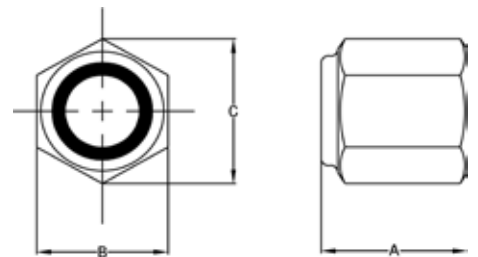
## Full Collar Style



REPAIR ACCESSORIES

Part Number	Bar Size	A	B	C	List Price
CM-LN45050	1/2"-20	0.60	0.75	0.84	\$ 4.20
CM-LN45062	5/8"-18	0.75	0.94	1.06	5.01
CM-LN45075	3/4"-16	0.88	1.06	1.19	18.30
CM-LN45087	7/8"-14	1.00	1.25	1.40	10.08
CM-LN45100	1"-14	1.06	1.44	1.62	13.65
CM-LN45101	1"-14	0.88	1.62	1.83	16.26
CM-LN45112	1-1/8"-12	1.19	1.62	1.83	18.73
CM-LN45126	1-1/4"-12	1.38	1.81	2.06	21.79
CM-LN45151	1-1/2"-12	1.62	2.19	2.44	28.62
CM-LN45152	1-1/2"-12	0.81	2.19	2.44	22.47
CM-LN45175	1-3/4"-12	1.50	2.75	3.06	55.07
CM-LN45200	2"-12	1.62	3.12	3.50	58.79
CM-LN45225	2-1/4"-12	1.94	3.50	3.94	125.19
CM-LN45226	2-1/4"-12	2.81	3.50	3.94	171.41
CM-LN45250	2-1/2"-12	2.25	4.00	4.60	271.44

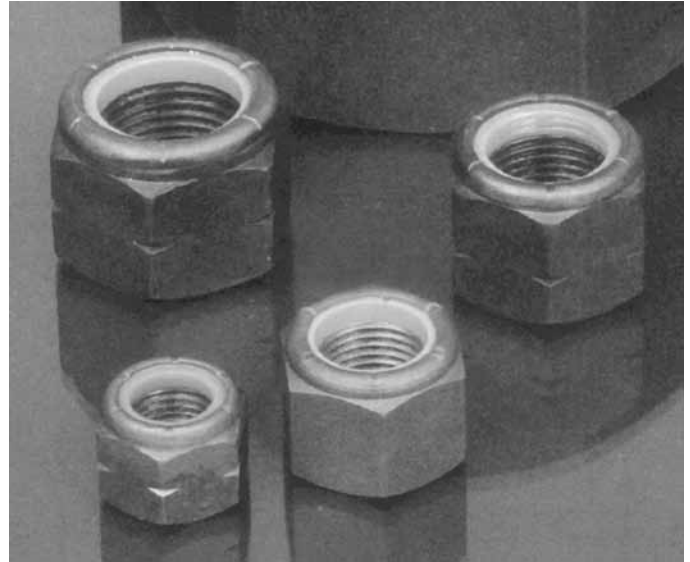
## Nylon Insert Lock Nut



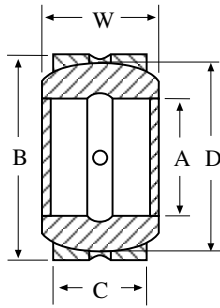
## “NYLON INSERT” LOCKING NUTS

Manufactured from the finest quality steel and heat treated to offer superior strength, MAXX Hydraulics locking nuts with nylon inserts are specifically designed and manufactured to exact dimensions. The high temperature locking inserts are designed to withstand the high temperatures associated with close tolerance performance applications.

Part Number	Thread Size & Pitch	Height	Flats	List Price
CTC-2J0564	2 - 12	1-5/8	3-1/8	\$ 96.38
CTC-2J3247	1-3/4 - 12	1-7/16	2-3/4	66.86
CTC-2J3950	1-1/2 - 12	1-5/16	2-3/8	37.86
CTC-2J6384	1-1/4 - 12	1-1/8	2	33.74
CTC-2J7686	2-1/2 - 12	2-3/16	4	219.68
CTC-3J6899	2-1/4 - 12	2-13/16	3-1/2	221.36
CTC-3J9449	2-1/2 - 12	2-5/8	4	253.70
CTC-3J9545	2 - 12	2-7/16	3-1/8	157.77
CTC-4J6888	2-3/4 - 12	2-1/4	4	160.37
CTC-4J8734	2-3/4 - 12	3-1/8	4	306.62
CTC-5J3488	2-1/4 - 12	1-15/16	3-1/2	162.51
CTC-5J5731	1-3/4 - 12	1-7/16	2-1/2	45.22
CTC-7J9250	3-1/4 - 12	3-1/8	4-1/2	327.88
CTC-9X6018	4 - 12	3.73	5.62	688.21
CTC-1438149	M48 × 2	50 mm	75 mm	146.59
CTC-1438150	M56 × 2	56 mm	85 mm	154.05
CTC-1336686	M56 × 2	57 mm	80 mm	168.44
CTC-1475835	M64 × 2	63 mm	95 mm	207.07
CTC-7Y4622	M72 × 2	70 mm	105 mm	383.18
CTC-7Y4695	M80 × 2	76 mm	115 mm	366.51
CTC-1232060	M80 × 2	64 mm	115 mm	259.85
CTC-1232112	M90 × 2	76 mm	130 mm	459.92
CTC-7Y4956	M90 × 2	84 mm	130 mm	438.88
CTC-0875385	M95 × 2	88 mm	135 mm	546.59
CTC-1261971	M100 × 2	89 mm	146 mm	1048.80
CTC-1163513	M105 × 2	97 mm	150 mm	943.73
CTC-1163516	M120 × 2	108 mm	170 mm	1043.94



# STYLE HH SELF ALIGNING BEARINGS



## SEAL INFORMATION

MATERIAL

CARBON  
CHROMIUM STEEL

SUFFIX:  
2RS = SEALED BEARINGS

SUFFIX:  
2RS = SEALED BEARINGS

REPAIR ACCESSORIES

Part Number	A Nom ID (in)	B Nom OD (in)	C Nom Width (in)	C1 Overall HT (in)	G Housing Dia (in)	Bearing Groove Dia (in)	Static Radial Load (lbs)	Dynamic Radial Load (lbs)	List Price
HH008ES	1/2	.875	.375	.437	0.8750 +0.0000 -0.0008	0.8799	9,337	3,156	\$ 21.55
HH010ES	5/8	1.062	.469	.547	1.0625 +0.0000 -0.0008	0.899	14,732	4,864	23.70
HH012ES	3/4	1.250	.562	.656	1.250 +0.0000 -0.0010	1.083	20,927	7,089	22.28
HH100ES	1	1.625	.750	.875	1.625 +0.0000 -0.0010	1.417	37,359	12,605	19.40
HH104ES	1-1/4	2.000	.937	1.093	2.0000 +0.0000 -0.0012	1.772	58,507	19,468	28.00
HH106ES	1-3/8	2.187	1.031	1.187	2.1875 +0.0000 -0.0012	1.929	69,756	23,404	42.38
HH108ES	1-1/2	2.438	1/125	1/312	2.4375 +0.0000 -0.0012	2.165	84,379	28,129	36.64
HH108ES2RS	1-1/2	2.438	1.125	1.312	2.4375 +0.0000 -0.0012	2.165	84,379	28,129	48.83
HH112ES	1-3/4	2.812	1.312	1.531	2.8125 +0.0000 -0.0012	2.520	114,752	38,255	50.29
HH112ES2RS	1-3/4	2.812	1.312	1.531	2.8125 +0.0000 -0.0012	2.520	114,752	38,255	63.20
HH200ES	2	3.187	1.500	1.750	3.1875 +0.0000 -0.0014	2.874	150,754	50,408	68.24
HH200ES2RS	2	3.187	1.500	1.750	3.1875 +0.0000 -0.0014	2.874	150,754	50,408	81.89
HH204ES	2-1/4	3.562	1.687	1.969	3.5625 +0.0000 -0.0014	3.228	191,251	63,002	93.38
HH204ES2RS	2-1/4	3.562	1.687	1.969	3.5625 +0.0000 -0.0014	3.228	191,251	63,002	122.13
HH208ES	2-1/2	3.937	1.875	2.187	3.9375 +0.0000 -0.0014	3.583	234,007	77,629	126.44
HH212ES	2-3/4	4.375	2.062	2.406	3.93.75 +0.0000 -0.0014	3.937	285,752	95,628	148.46
HH300ES	3	4.750	2.250	2.625	4.7500 +0.0000 -0.0016	4.331	337,506	112,505	222.69
HH300ES2RS	3	4.750	2.250	2.625	4.7500 +0.0000 -0.0016	4.331	337,506	112,505	254.31
HH308ES	3-1/2	5.500	2.625	3.062	5.5000 +0.0000 -0.0016	5.039	459,001	153,003	395.10
HH308ES2RS	3-1/2	5.500	2.625	3.062	5.5000 +0.0000 -0.0016	5.039	459,001	153,003	438.21
HH312ES	3-3/4	5.875	2.812	3.281	5.8750 +0.0000 -0.0016	5.394	531,004	175,507	426.71
HH400ES	4	6.250	3.000	3.500	6.2500 +0.0000 -0.0016	5.748	596,256	202,508	576.12

# STYLE MHH SELF ALIGNING BEARINGS

Part Number	A Nom ID (mm)	B Nom OD (mm)	C Nom Width (mm)	C1 Overall HT (mm)	G Housing Dia (mm)		Bearing Groove Dia (mm)	Static Radial Load (lbs)	Dynamic Radial Load (lbs)	Design	Material	List Price
MHH20ES	20	35	12	16	35.000	+0.0000 -0.0250	29	32,857	6,759	MHH	STEEL	\$ 27.18
MHH25ES	25	42	16	20	42.000	+0.0000 -0.0250	35.5	54,003	10,804	MHH	STEEL	33.84
MHH25ES2RS	25	42	16	20	42.000	+0.0000 -0.0250	35.5	54,003	10,804	MHH	STEEL	31.58
MHH30ES	30	47	18	22	47.000	+0.0000 -0.0250	40.7	69,751	13,951	MHH	STEEL	35.82
MHH30ES2RS	30	47	18	22	47.000	+0.0000 -0.0250	40.7	69,751	13,951	MHH	STEEL	44.81
MHH35ES	35	55	20	25	55.000	+0.0000 -0.0300	47	90,008	18,009	MHH	STEEL	46.41
MHH35ES2RS	35	55	20	25	55.000	+0.0000 -0.0300	47	90,008	18,009	MHH	STEEL	44.81
MHH40ES	40	62	22	28	62.000	+0.0000 -0.0300	53	112,507	22,501	MHH	STEEL	51.21
MHH40ES2RS	40	62	22	28	62.000	+0.0000 -0.0300	53	112,507	22,501	MHH	STEEL	43.95
MHH45ES2RS	45	68	25	32	68.000	+0.0000 -0.0300	60	144,009	28,578	MHH	STEEL	79.07
MHH50ES	50	75	28	35	75.000	+0.0000 -0.0300	66	175,509	35,109	MHH	STEEL	74.79
MHH50ES2RS	50	75	28	35	75.000	+0.0000 -0.0300	66	175,509	35,109	MHH	STEEL	145.76
MHH60ES	60	90	36	44	90.000	+0.0000 -0.0350	80	274,509	55,128	MHH	STEEL	115.51
MHH70ES	70	105	40	49	105.000	+0.0000 -0.0350	92	351,007	70,876	MHH	STEEL	173.17
MHH70ES2RS	70	105	30	49	105.000	+0.0000 -0.0350	92	351,007	70,876	MHH	STEEL	145.76
MHH80ES	80	120	45	55	120.000	+0.0000 -0.0350	105	450,005	90,008	MHH	STEEL	189.01

## SET SCREWS



These set screws are used on many cylinder headnuts. Use nylon plugs to ensure no damage to the headnut threads. All set screws employ Allen wrench heads.

Part Number	Thread Size	Length	List Price
SS-1/4-20X1/2	1/4-20	1/2	\$ 0.98
SS-1/4-20X3/8	1/4-20	3/8	1.15
SS-1/4-28X1/4	1/4-28	1/4	0.93
SS-1/4-28X3/8	1/4-28	3/8	0.93
SS-5/16-18X1/4	5/16-18	1/4	0.93
SS-5/16-18X3/8	5/16-18	3/8	0.93
SS-5/16-18X3/4	5/16-18	3/4	1.25
SS-5/16-24X5/16	5/16-24	5/16	0.40
SS-5/16-24X3/8	5/16-24	3/8	1.25
SS-3/8-16X3/8	3/8-16	3/8	0.70
SS-3/8-16X1/2	3/8-16	1/2	0.98
SS-3/8-16X5/8	3/8-16	5/8	1.21
SS-3/8-16X7/8	3/8-16	7/8	1.39
SS-1/2-13X1/2	1/2-13	1/2	1.63
SS-1/2-13X5/8	1/2-13	5/8	1.89
SS-#8-32X1/4	#8-32	1/4	2.19
SS-#10-24X1/4	#10-24	1/4	0.93

## NYLON PLUGS



These nylon plugs are used with headnut set screws to ensure that there is no damage to the headnut threads.

Part Number	Diameter	Length	List Price
NYPLUG-125-125	1/8	1/8	\$ 0.64
NYPLUG-125-156	1/8	5/32	0.64
NYPLUG-125-875	1/8	7/8	0.44
NYPLUG-187-109	3/16	7/64	0.45
NYPLUG-187-187	3/16	3/16	0.64
NYPLUG-187-250	3/16	1/4	0.65
NYPLUG-250-070	1/4	0.070	0.78
NYPLUG-250-125	1/4	1/8	0.64
NYPLUG-250-187	1/4	3/16	0.64
NYPLUG-250-250	1/4	1/4	0.53
NYPLUG-312-125	5/16	1/8	0.64
NYPLUG-312-250	5/16	1/4	1.95
NYPLUG-312-312	5/16	5/16	1.84
NYPLUG-375-250	3/8	1/4	0.64
NYPLUG-500-875-125H	1/2	7/8	4.79

## WIND-IN LOCK WIRES



Part Number	Thickness	Length	List Price
LW-093-1262	3/32 sq.	12-5/8	\$ 26.49
MARION-35240	1/8 sq.	10-1/4	12.24
MARION-35250	1/8 sq.	13-3/8	11.54
MARION-35260	1/8 sq.	16-3/8	11.75
MARION-35270	1/8 sq.	19-1/4	13.50
MARION-1031	3/16 sq.	21.00	16.92
1/8 RD WIRE	1/8 round	11	2.19

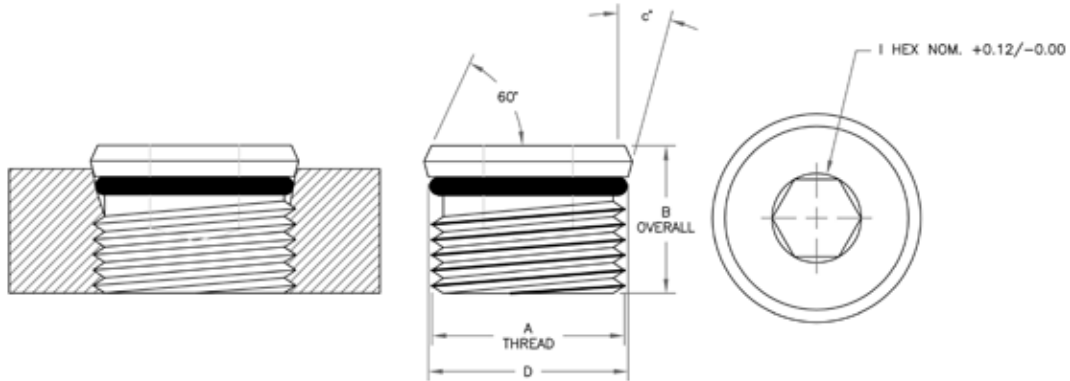
## FILTER VENT PLUGS



These plugs are used to allow air to pass in and out of the non-pressurized end of a single-acting cylinder.

Part Number	NPT Port Size	List Price
FV-.125	1/8	\$ 4.60
FV-.250	1/4	6.23
FV-.375	3/8	7.53
FV-.500	1/2	9.04
FV-.750	3/4	13.90
FV-1.000	1	16.66

# ZERO-LEAK GOLD STANDARD THREAD PORT PLUGS



Part Number	Size	"A" UNF 2A THREAD	"B" +0.02 -0.02	"C" +0 -0.50	"D" +0.003 -0.003	"I" +0.005 -0.00	O-Ring Size	Tested Torque Value (ft-lbs)	List Price
SHTPP-S04	4	7/16" - 20"	0.45	12	0.477	0.188	8.0 X 1.5	7	\$ 2.24
SHTPP-S06	6	9/16" - 18"	0.48	12	0.606	0.25	12.1 X 1.6	11	2.83
SHTPP-S08	8	3/4" - 16"	0.56	15	0.8	0.313	15.6 X 1.78	28	3.33
SHTPP-S10	10	7/8" - 14"	0.63	15	0.93	0.375	18.0 X 2.0	46	4.50
SHTPP-S12	12	1-1/16"-12	0.75	15	1.13	0.563	22.3 X 2.4	51	7.97
SHTPP-S16	16	1-5/16"-12	0.75	15	1.385	0.625	27.0 X 2.5	-	15.30

# MANUAL BLEEDER VALVES



Part Number	Thread Size	Min Pkg Qty	List Price
WH705	1/8 NPT	3	\$ 5.18

## LOCTITE



Threadlocker 242 locks fasteners 1/4" and larger yet allows easy disassembly with hand tools. Prevents rust and corrosion.

Part Number	Application	List Price
LOCTITE-24205	Removable Threadlocker 0.5 ml bottle	\$ 12.31
LOCTITE-24221	Removable Threadlocker 10 ml bottle	45.72
LOCTITE-24231	Removable Threadlocker 50 ml bottle	125.24
LOCTITE-27105	High Strength Threadlocker 0.5 ml bottle	8.42
LOCTITE-29021	Penetrating Threadlocker 10 ml bottle	64.44
LOCTITE-29031	Penetrating Threadlocker 50 ml bottle	111.40
LOCTITE-54531	Hyd/Pneum Thread Sealant 50 ml tube	112.65
LOCTITE-82325	Super Lube 3 oz tube	25.09

## TURBO LOCK



Turbo Lock threadlocker adhesive series is an economical alternative to Loctite.

Part Number	Application	List Price
THREAD LOCKER-11-001	Removable Threadlocker 2 ml bottle	\$ 4.64
THREAD LOCKER-11-010	Removable Threadlocker 10 ml bottle	32.34
THREAD LOCKER-11-050	Removable Threadlocker 50 ml bottle	56.60
THREAD LOCKER-14-001	High Strength Threadlocker 2 ml bottle	4.64
THREAD LOCKER-14-250	High Strength Threadlocker 250 ml bottle	194.41
THREAD LOCKER-16-010	Penetrating Threadlocker 10 ml bottle	20.03
THREAD LOCKER-16-050	Penetrating Threadlocker 50 ml bottle	51.86

## SEAL LUBE™

### O-Ring Lubricant



**Part Number: SEAL LUBE**  
**List Price: \$ 22.00**

Seal-Lube™ lubricant is a thick, clear, high viscosity silicone oil for use with most seal (except silicone) and a wide variety of hydraulic fluids. Insoluble in water, alcohol, petroleum oil and glycol, Seal-Lube™ can prolong seal life when applied prior to seal installation. Chemically inert and non-toxic, Seal-Lube™ retains its viscosity over a wide temperature range. The handy squeeze 2 ounce bottle dispenses just enough where you want it.

## O-RING ADHESIVE

**Part Number: OR CEMENT**  
**List Price: \$ 40.53**

O-Ring adhesive in a 12g tube.



**Set Screw and Nylon Plug Assortment Kits**  
**Also Available -**  
**See the Kits & Tools Section**

## PTFE THREAD SEAL TAPE

Part Number: PTFE TAPE

List Price: \$ 2.86



1/2" Wide by 520" Roll

## GREASE FITTINGS



Part Number	Description	List Price
GF-125NPTS	1/8" NPT STRAIGHT	\$ 1.01
GF-125NPT45	1/8" NPT 45°	2.05
GF-125NPT90	1/8" NPT 90°	2.05
GF-187DS	3/16" DRIVE STRAIGHT	0.90
GF-250-28S	1/4"-28 STRAIGHT	0.67
GF-250-28-45	1/4"-28 45°	1.81
GF-250-28-90	1/4"-28 90°	1.81
GF-312DS	5/16" DRIVE STRAIGHT	1.16

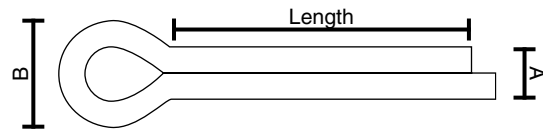
## GREASE FITTING CAP



Low density polyethane cap plug for use with standard grease fittings.

Part Number	Description	List Price
CAP-GF-10	Cap Plug	\$ 0.19

## COTTER PINS



Part Number	Length	A	B	List Price
CP-1X3/32	1	.082	3/16	\$ 0.41
CP-1-1/4X1/8	1-1/4	.115	1/4	0.30
CP-1-1/2X5/32	1-1/2	.150	5/16	0.41
CP-1-3/4X3/16	1-3/4	3/16	.390	0.22
CP-2X3/16	2	.176	3/8	0.50
CP-2X1/4	2	.225	1/2	0.41
CP-2-1/2X5/32	2-1/2	5/32	.357	0.49
CP-2-1/2X1/8	2-1/2	.115	1/4	0.30
CP-2-1/2X3/16	2-1/2	.176	3/8	0.60
CP-2-1/2X1/4	2-1/2	.225	1/2	0.56
CP-3X5/32	3	.150	5/16	0.52
CP-3X1/4	3	1/4	.520	1.39
CP-3-1/2X1/4	3-1/2	.225	1/2	0.77
CP-4X1/4	4	.225	1/2	0.88
CP-5X1/4	5	.225	1/2	2.77
CP-6X5/16	6	.280	5/8	3.29



## STYLE MCPL COUPLINGS

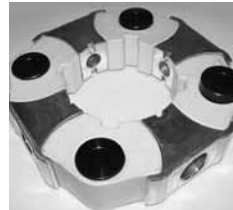
MCPL power transmission couplings are commonly found on mobile equipment to solve vibration problems in engine driven equipment. The rubber or Hytrel elements effectively absorb shock loads, misalignment forces, and torsional vibrations generated by the connecting equipment at start-up for example. The coupling is axially connected to a PTO or flywheel on the engine side and radially connected to the driven equipment such as hydraulic pumps, generators, etc.



50H



110H



140H



50A

Part Number	Description	Material	Application	List Price
MCPL-110H-AL	COUPLING - ALUM/HYT	Plastic with Aluminum	Hitachi, Kato, etc.	\$ 486.69
MCPL-140H-AL	COUPLING - ALUM/HYT	Plastic with Aluminum	Komatsu, Kobelco, Kato, etc.	770.14
MCPL-50A-AL	COUPLING - ALUM/HYT	Rubber with Aluminum	Kobelco, Mitsubishi, etc.	361.94
MCPL-50H-AL	COUPLING - ALUM/HYT	Plastic with Aluminum	Komatsu, Hitachi, Kobelco, Mitsubishi, Kato, etc.	318.90

**Cotter Pin and Grease Fitting Assortment Kits  
Also Available -  
See the Kits & Tools Section**