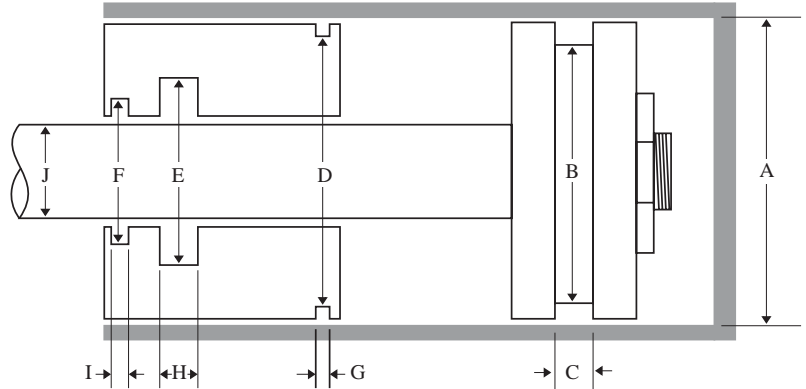




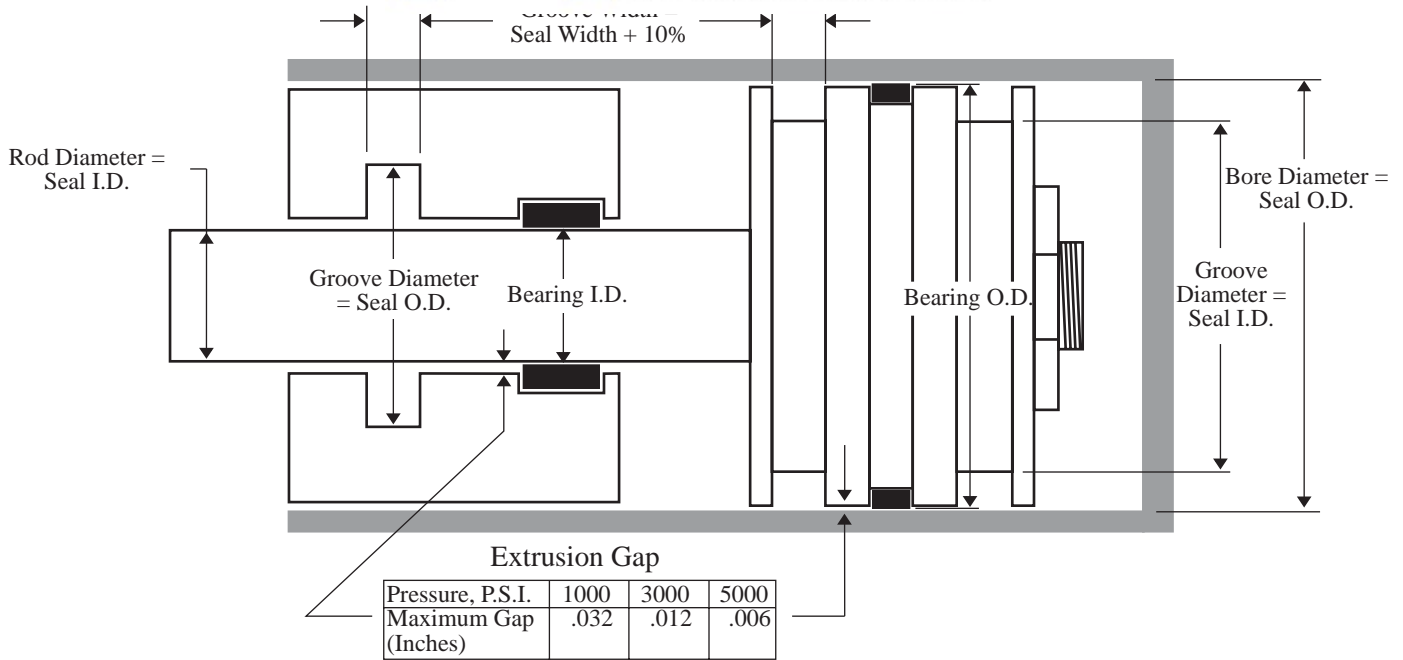
HOW OFTEN HAVE YOU RECEIVED A CYLINDER FOR REPAIR AND THE SEALS WERE . . .

- MISSING
  - EXTRUDED
  - ROLLED
- COOKED
  - NIBBLED
  - SPLIT
- INCORRECT
  - TWISTED
  - WORN OUT



**For a professional analysis of seal failure, send your damaged seals to our Engineering department.**

<u>PISTON SEALS AND BEARINGS</u>	
<u>DIAGRAM REFERENCE</u>	<u>DIMENSIONS</u>
A = Bore = Seal O.D.	_____
B = Groove Diameter = Seal I.D.	_____
C = Groove Width = Nominal Seal Width	_____
<u>ROD SEALS AND BEARINGS</u>	
<u>DIAGRAM REFERENCE</u>	<u>DIMENSIONS</u>
D = Gland Groove Diameter = Seal I.D.	_____
E = Rod Seal Groove Diameter = Seal O.D.	_____
F = Wiper Groove Diameter = Wiper O.D.	_____
G = Gland Groove Width = Nominal Seal Width	_____
H = Rod Seal Groove Width = Nominal Seal Width	_____
I = Wiper Groove Width = Base Width	_____
J = Rod Diameter = Seal & Wiper I.D.	_____



## ROD AND ROD GROOVE DIAMETERS

ROD DIAM RANGE, IN.	ROD DIAM. TOLERANCE	GROOVE DIAM TOLERANCE	MAX DIAMETRICAL CLEARANCE		
			1000 PSI	3000 PSI	5000 PSI
.125 - .687	+ .0 / -.002	+ .004 / -.0	.008	.006	.004
.750 - 2.875	+ .0 / -.003	+ .008 / -.0	.012	.008	.004
3.000 - 7.000	+ .0 / -.004	+ .010 / -.0	.014	.010	-
7.000 - 7.750	+ .0 / -.005	+ .011 / -.0	.016	.010	-
8.000 - 9.500	+ .0 / -.005	+ .012 / -.0	.016	-	-
10.000 - 15.000	+ .0 / -.006	+ .015 / -.0	.016	-	-

## BORE AND PISTON GROOVE DIAMETERS

BORE DIAM RANGE, IN.	BORE DIAM. TOLERANCE	GROOVE DIAM TOLERANCE	MAX DIAMETRICAL CLEARANCE		
			1000 PSI	3000 PSI	5000 PSI
.750 - 1.062	+ .003 / -.0	+ .0 / -.004	.010	.008	.004
1.125 - 1.625	+ .003 / -.0	+ .0 / -.005	.010	.008	.004
1.750 - 2.500	+ .003 / -.0	+ .0 / -.007	.012	.008	.004
2.625 - 2.875	+ .003 / -.0	+ .0 / -.008	.012	.008	.005
3.000 - 3.500	+ .004 / -.0	+ .0 / -.008	.014	.010	-
3.625 - 5.625	+ .004 / -.0	+ .0 / -.009	.014	.010	-
5.750 - 6.750	+ .004 / -.0	+ .0 / -.010	.014	.010	-
7.000 - 8.500	+ .005 / -.0	+ .0 / -.011	.016	.010	-
9.000 - 11.000	+ .005 / -.0	+ .0 / -.011	.016	-	-
12.000 - 16.000	+ .006 / -.0	+ .0 / -.012	.018	-	-